

### Applies to

CLMBR02 Pure machines serial numbers ARCLPR23040001 and higher  
CLMBR02 Connected machines serial numbers ARCLCN23240001 and higher

### Issue

The handles no longer come pre-installed on the uprights and are now packed separately in the box. The handles are installed during initial assembly after the machine is rotated onto its back and prior to raising it to standing.

---

### Tools

5mm hex key

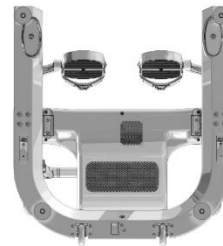
### Parts

Left Handle  
Right Handle

---

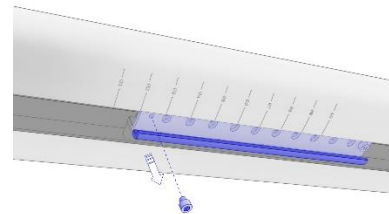
### Procedure

1. During the initial assembly, follow the assembly steps until the machine has been rotated on its back.

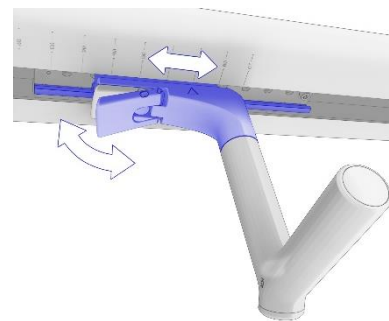


2. Remove the lower stop bolt (5mm hex key) from the left handle carriage.

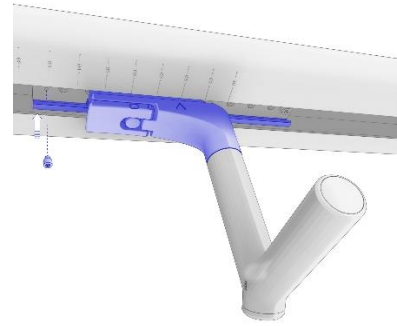
**NOTE: The stop bolt is very short and can easily fall into the upright**



3. Lift the left handle release lever and continue to slide the handle to the top of the track. Release the lever and ensure the handle locks into place.

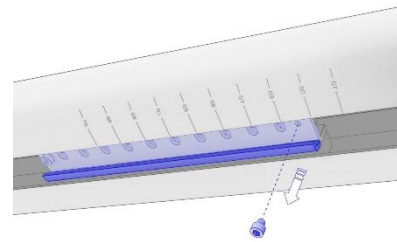


4. Reinstall the stop bolt.

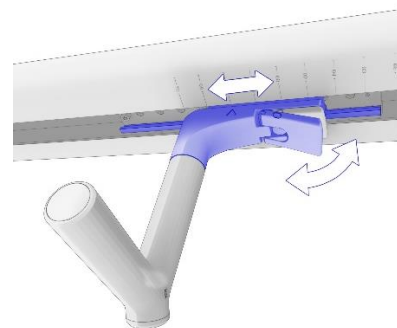


5. Remove the lower stop bolt (5mm hex key) from the right handle carriage.

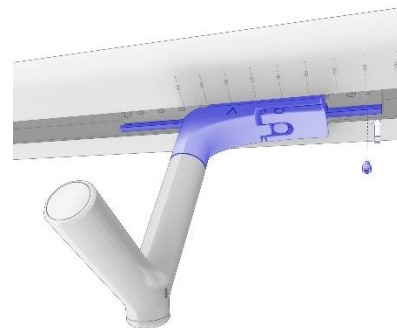
**NOTE: The stop bolt is very short and can easily fall into the upright**



6. Lift the right handle release lever and continue to slide the handle to the top of the track. Release the lever and ensure the handle locks into place.



7. Reinstall the stop bolt.



8. Continue assembling the machine according to assembly instructions.